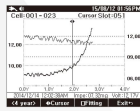


Battery Quality Analyzer



TEKON® 950

To prevent faults or quality issues in critical battery back-up applications caused by defects in stationary batteries, TEKON950 battery quality analyzer enables the user to diagnose and evaluate the performance and the degree of ageing by testing the conditions of individual batteries (400V max) in type of cell, module or pack.

TEKON950 can handle virtually all battery testing (e.g. aged status of battery under test and the condition of a power system) in systems that use high-voltage battery packs, such as ESS, EV, HEV and PV as well as UPS.

Features

- Measures internal resistance of 400V max of batteries
- Measures voltages at battery (DC500V)
- Measures voltage of UPS (AC500V)
- Measures ripple voltage, current and temperature
- Measures capacity of battery (Capacity)
- Diagnoses ageing of battery and predicts its use life (to determine timing for replacement)
- Can conduct history management of battery using 8MB memory
- Auto Hold and Data Storage
- Prints out measurement data in reports
- Transmits measurement data to remote locations (e-mail, server) using Mobile App
- Removable wireless printer applied

General specifications

Power (battery)	7.2V/5.2Ah Li-ion, 12V/2.5A DC adaptor
Data storage	8MB
Communication	Bluetooth Ver2.1 + EDR Class2
LCD display	4.0 monographic
Operating temp/ humidity	0°C ~ 50°C, RH 85% max
Storage temp/ humidity	-20°C ~ 60°C, RH 85% max
Compliant standards	IEC 61010-1 CAT III 500V Pollution Degree 2, EN61326-1:2013
Dimension	240(L)×198(W)×109(H) mm
Weight	1.4kg
Case Color	Black

Electrical Specifications

Measurement of Resistance (Auto/Manual)			
Range	Resolution	Measurable current	Accuracy
3mΩ	1μΩ	100mA	±1.0%rdg±10dpts
30mΩ	10μΩ	100mA	±0.8%rdg±10dpts
300mΩ	100μΩ	10mA	
3Ω	1mΩ	1mA	
30Ω	10mΩ	0.1mA	
300Ω	100mΩ	0.1mA	
DC/V (Auto/Manual)			
Range	5, 50, 500V		
Resolution	1mV		
Accuracy	±0.5%rdg±5dpts		
AC/V			
Range	0~500V		
Resolution	100mV		
Frequency	40Hz~100Hz		
Accuracy	±0.75%rdg±10dpts		
Ripple Voltage			
Range	0~5V		
Resolution	1mV		
Frequency	40Hz~10KHz		
Accuracy	±5.0%rdg±10dpts		
Measurement of Temperature			
Range	-10°C ~ 100°C		
Resolution	0.1°C		
Accuracy	±1°C±2dpts		

DC Current	
Range	4, 40, 400A
Resolution	1mA
Accuracy	±0.5%rdg±5dpts (±CT Tolerance)
AC Current	
Range	4, 40, 400A
Resolution	1mA
Accuracy	±0.75%rdg±10dpts (±CT Tolerance)
Measurement of Capacity (950B)	
Measuring method	Rated capacity, charge/discharge test
Range	0 ~ 100%Ah
Measurable capacity	0 ~ 2000Ah
Parameters displayed	Efficiency, capacity Ah, Average current, Charge-discharge time, Graph

Accessories

Standard	Pin-type Kelvin Probe, Test Lead, Li-ion battery (7.2V/5.2Ah), 12V/2.5A adaptor, Zero-Bar, Portable bag, PC Program, User's Manual, Current Clamp(T130BEI)/950B
Optional	Current Clamp(T130BEI), Current Clamp(T135BEI), Kelvin Probe(clip), Kelvin Probe(Pin), Extensible Rod(500mm), Wireless printer

Comparison of Functions in TEKON950 Series

Function		TEKON950A	TEKON950B
Impedance	Scale	3mΩ~3000(range)	3mΩ~3000(range)
	Accuracy	±0.8%	±0.8%
	Max Test Voltage	200V	400V
DC/V		0~500V	0~500V
AC/V		0~500V	0~500V
Ripple Voltage		0~5V	0~5V
DC/A		4A/40A/400A	4A/40A/400A
AC/A		4A/40A/400A	4A/40A/400A
Temperature		o	o
Analyzer	Trend	o	o
	Change time	o	o
Capacity		x	o
Data record		8MB	8MB
PC Interface		Bluetooth	Bluetooth
External Interface		Mobile App	Mobile App
Auto Hold		o	o
Auto Record		o	o